

PLANS FOR:

# ROCKLIN CEMETERY PAVEMENT PROJECT

PROJECT NO. 2026.2

NEWCASTLE ROCKLIN GOLD HILL CEMETERY DISTRICT

JUNE 2026

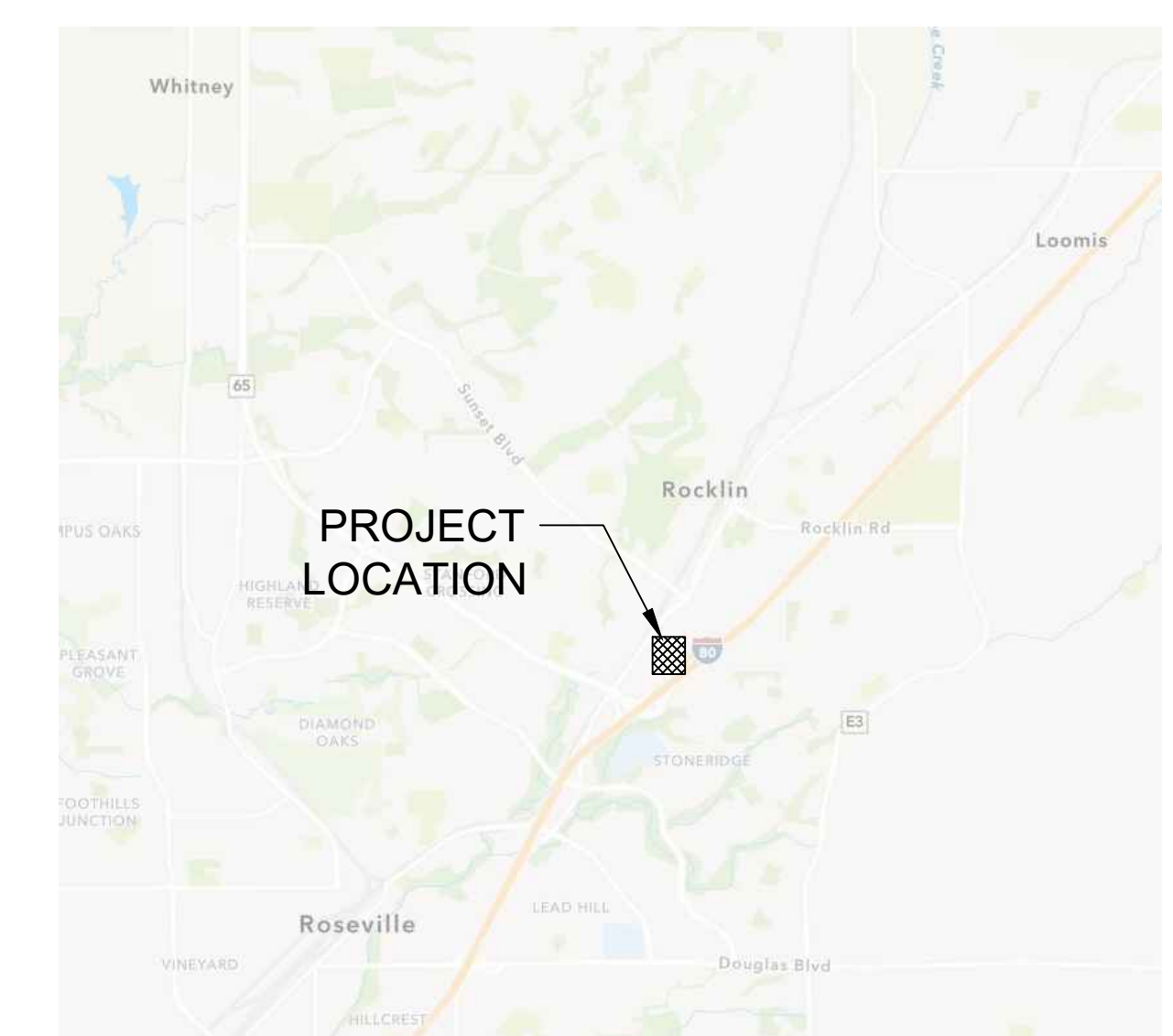
LEGEND:

CIVIL PLANS:

- C0 COVER SHEET
- C1 PAVEMENT PLAN
- C2 PAVEMENT NOTES AND DETAILS



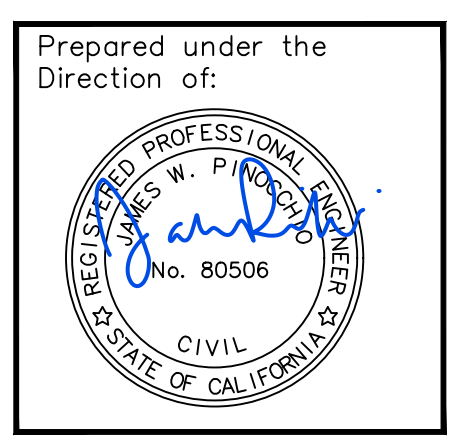
PROJECT LOCATION



VICINITY MAP

CONSULTANT

NEWCASTLE ROCKLIN GOLD HILL CEMETERY DISTRICT  
850 TAYLOR ROAD, NEWCASTLE, CA 95658  
**COVER SHEET**  
Newcastle Placer County California



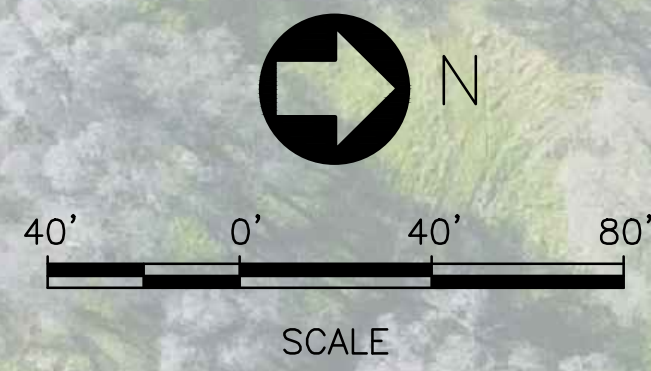
REVISIONS	DATE
BID SET	06/02/2026

JOB #	2025.1
DESIGNED	JP
DRAWN	JP
CHECKED	JP
DATE	06/02/2026
SCALE	AS SHOWN

SHEET **C0**

**PAVEMENT NOTE DESIGNATIONS**

- (R1) = DIGOUT AND REPAIR, SEE TYPICAL DETAIL 2, SHEET C2
- (R2) = GRIND AND REMOVE COMPLETE SECTION, SEE TYPICAL DETAIL 1, SHEET C2
- (R3) = 1.5 INCH GRIND AND REPLACE, SEE TYPICAL DETAIL 3, SHEET C2
- (R4) = REMOVE EXISTING UTILITY BOX, INSTALL AND RAISE NEW BOX W/ TRAFFIC RATED AND LIFT ASSIST LID SEE DETAIL 8 & 9, SHEET C2. INSTALL 8 INCHES ROAD BASE MINIMUM UNDER EACH BOX, COMPACTED AT 95% R.C.
- (R5) = INSTALL NEW PAVEMENT MARKINGS COMPLETE TO MATCH EXISTING



INSTALL 8 INCH HDPE STORM DRAIN LINE. 16 INCH WIDE TRENCH. BACKFILL WITH SAND UNDER AND AROUND PIPE AND NATIVE ABOVE. SECTION WITHIN ROADWAY SHALL HAVE A MINIMUM OF 3 INCHES CLASS II BASE AND 3 INCHES AC PAVEMENT.

INSTALL NEW JENSEN BOX SPECIFIED IN DETAIL 7, SHEET C2. INCLUDE RISERS AS REQUIRED TO MATCH ELEVATIONS OF EXISTING STORM LINE AND SURFACE.

CONNECT TO EXISTING LINE AS REQUIRED. POTHOLE TO DETERMINE EXACT SIZE, DEPTH AND LOCATION AS REQUIRED.

APPROXIMATE LOCATION OF EXISTING STORM DRAIN LINE.

ADD AC PAVEMENT WITH LARGER RADIUS. LAYOUT TO BE FIELD APPROVED BY ENGINEER PRIOR TO INSTALLATION.

WHERE NEW PAVEMENT AREAS ARE WITHIN EXISTING NON-PAVED SECTIONS, INSTALL SECTION PER DETAIL 1, SHEET C2

WIDEN EXISTING ROADWAY 3' +/- PER SECTION DETAIL 5, SHEET C2

ADD 6 INCH CONCRETE VERTICAL CURB AND CONNECT TO AND AROUND EXISTING DOWNSTREAM STORM DRAIN INLET.

SEE DETAIL 6, SHEET C2 FOR CONCRETE VERTICAL CURB.

FIELD APPROVE LAYOUT CURB, ELEVATION AND ALIGNMENT WITH ENGINEER PRIOR TO START OF WORK.

INSTALL NEW DRAIN BOX AND GRATE. JENSEN BOX AND MODIFICATIONS PER DETAIL 7, SHEET C2.

GRIND 1.5" INTO EXISTING PAVEMENT 12"

WIDEN EXISTING ROADWAY 3' +/- PER SECTION DETAIL 4, SHEET C2

ADD 6 INCH CONCRETE VERTICAL CURB AND CONNECT TO AND AROUND EXISTING DOWNSTREAM STORM DRAIN INLET.

SEE DETAIL 6, SHEET C2 FOR CONCRETE VERTICAL CURB.

FIELD APPROVE LAYOUT CURB, ELEVATION AND ALIGNMENT WITH ENGINEER PRIOR TO START OF WORK.

WIDEN EXISTING ROADWAY 2' +/-

**PAVEMENT PLAN**  
SCALE: 1"=40'

NEWCASTLE ROCKLIN GOLD HILL CEMETERY DISTRICT  
850 TAYLOR ROAD, NEWCASTLE, CA 95658

**PAVEMENT PLAN**

Newcastle Placer County California

Prepared under the Direction of:

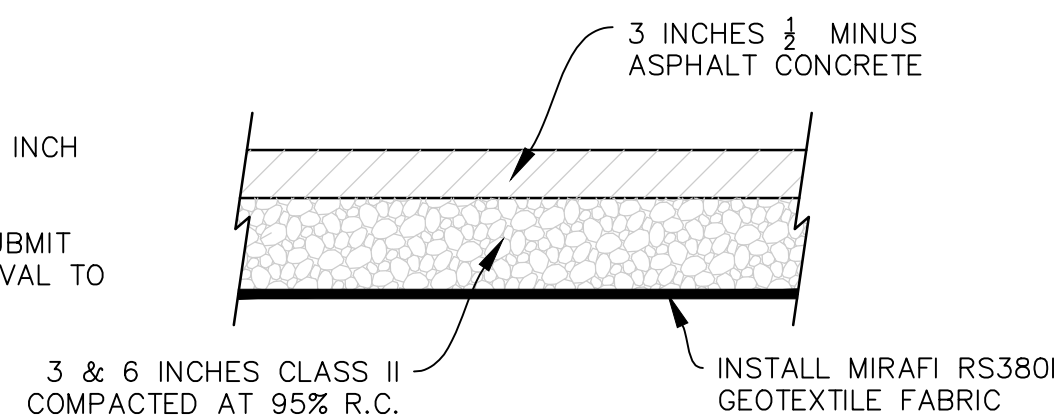
REVISIONS	DATE
BID SET	06/02/2026

JOB #	2025.1
DESIGNED	JP
DRAWN	JP
CHECKED	JP
DATE	06/02/2026
SCALE	AS SHOWN

SHEET **C1**

NOTES:

1. COMPACT LAYERS IN 4 INCH MAX SECTIONS.
2. CONTRACTOR SHALL SUBMIT MATERIALS FOR APPROVAL TO ENGINEER PRIOR TO INSTALLATION.

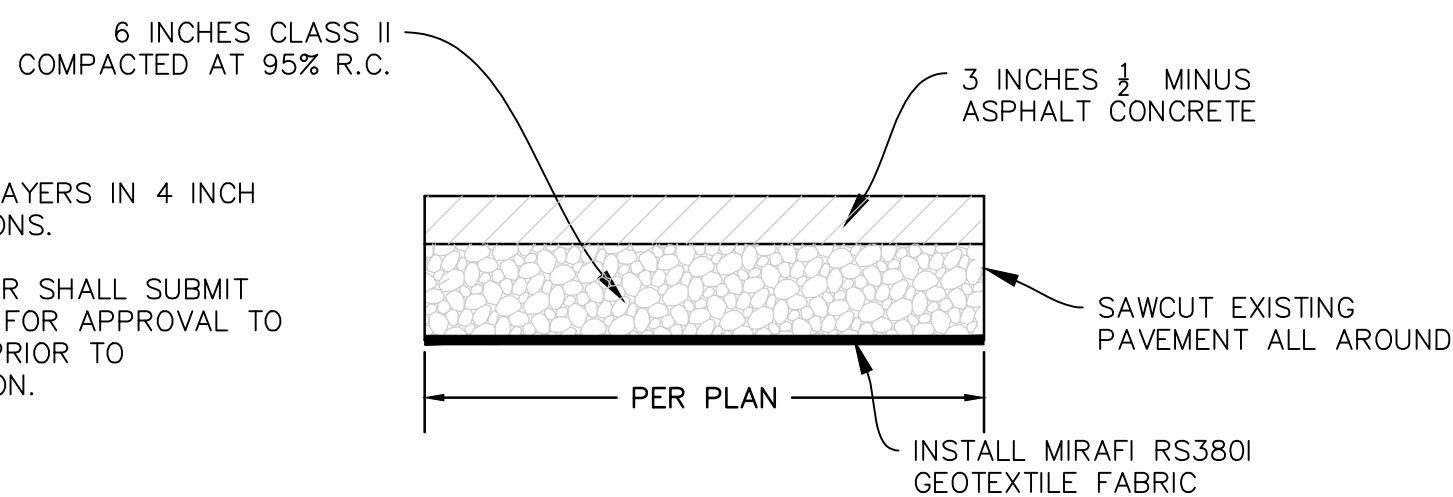


TYPICAL ROADWAY SECTION 1

NOT TO SCALE

NOTES:

1. COMPACT LAYERS IN 4 INCH MAX SECTIONS.
2. CONTRACTOR SHALL SUBMIT MATERIALS FOR APPROVAL TO ENGINEER PRIOR TO INSTALLATION.

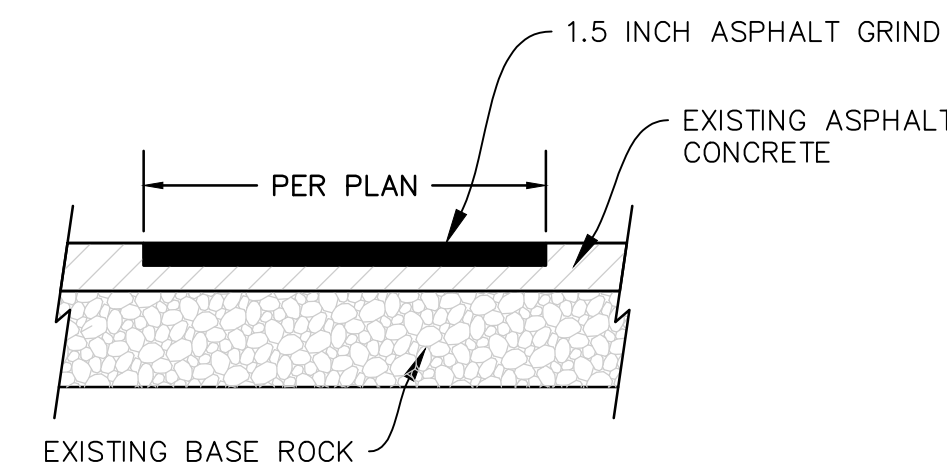


TYPICAL DIGOUT OR WIDENING SECTION 2

NOT TO SCALE

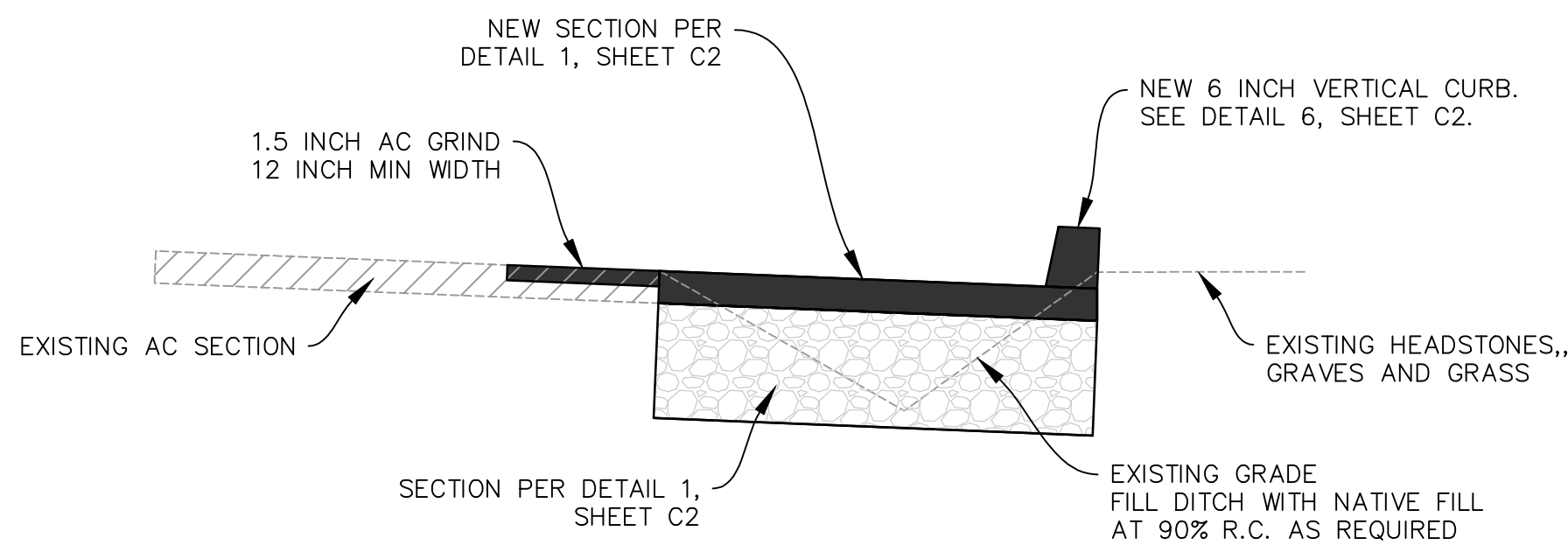
NOTES:

1. GRIND 6 INCHES MINIMUM BEYOND EDGE OF ANY EXISTING TRENCH LINE.



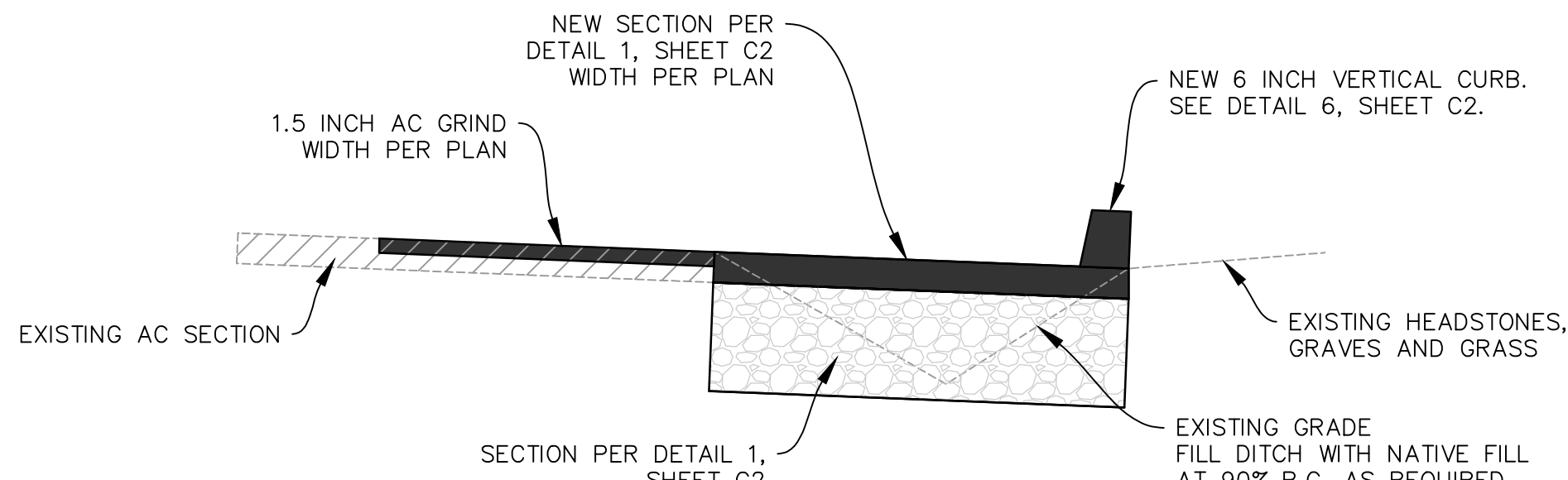
TYPICAL 1.5 INCH GRIND SECTION 3

NOT TO SCALE



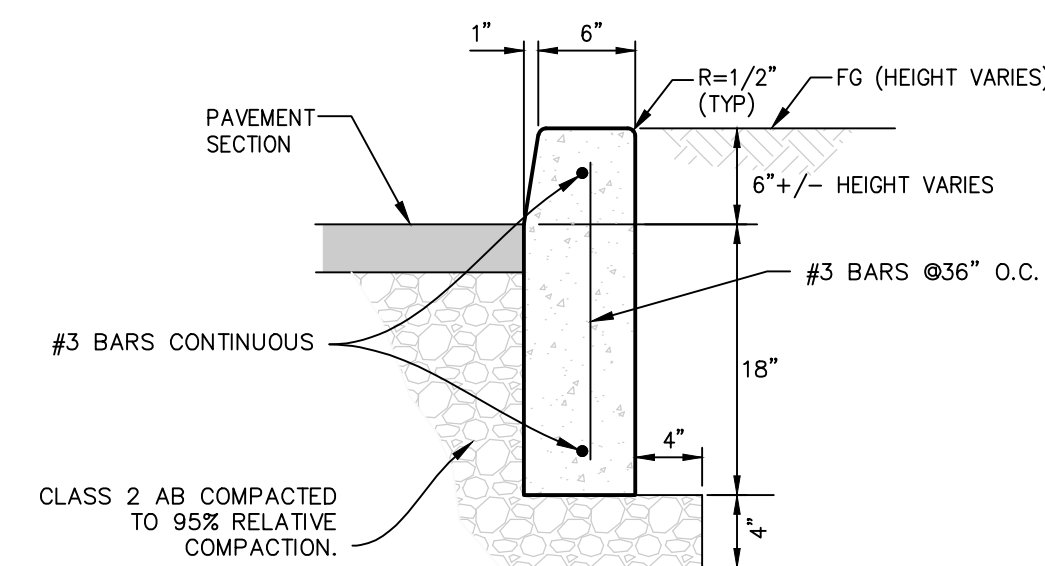
TYPICAL CROSS SECTION 4

NOT TO SCALE



TYPICAL CROSS SECTION 5

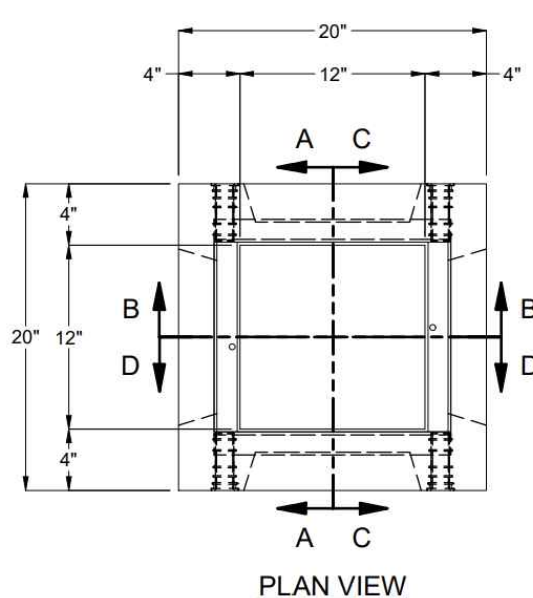
NOT TO SCALE



VERTICAL CURB DETAIL 6

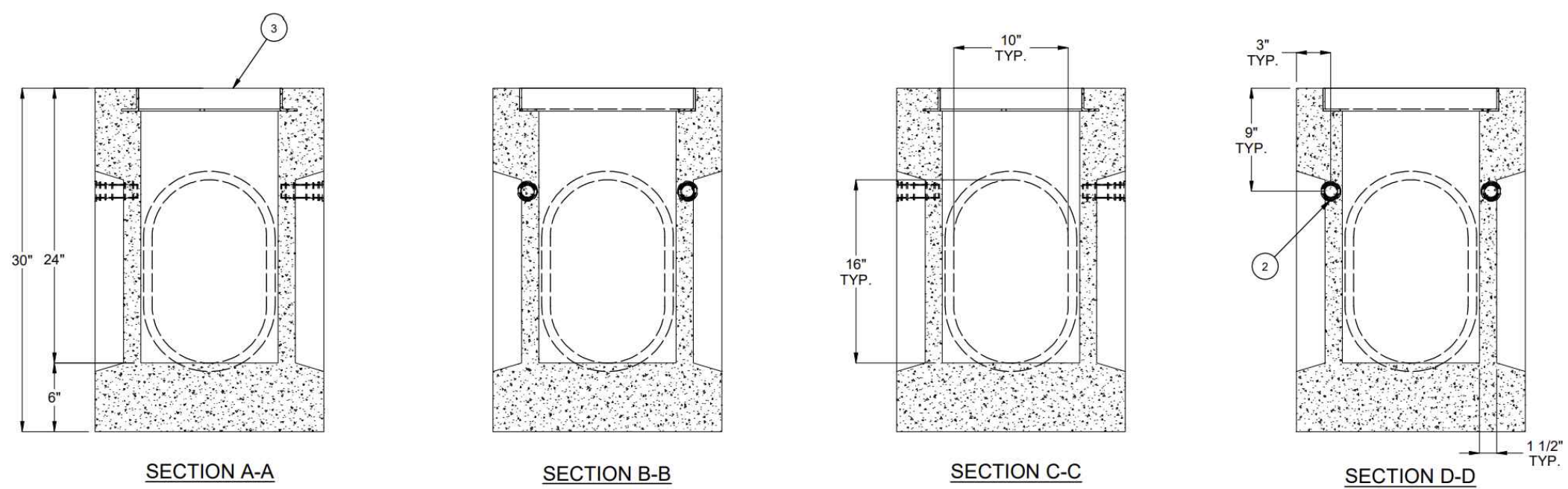
NOT TO SCALE

1. EXCAVATIONS OVER FIVE FEET (5') DEEP REQUIRE AN EXCAVATION PERMIT FROM THE STATE DEPARTMENT OF INDUSTRIAL SAFETY.
2. CONTRACTOR SHALL CALL "USA NORTH" AT (800) 227-2600 AT LEAST ONE (1) WEEK PRIOR TO START OF CONSTRUCTION FOR LOCATING UNDERGROUND UTILITIES.
3. CONSTRUCTION CONTRACTOR AGREES THAT IN ACCORDANCE WITH GENERALLY ACCEPTED CONSTRUCTION PRACTICES, CONSTRUCTION CONTRACTOR WILL BE REQUIRED TO ASSUME SOLE AND COMPLETE RESPONSIBILITY FOR JOB SITE CONDITIONS DURING THE COURSE OF CONSTRUCTION OF THE PROJECT, INCLUDING SAFETY OF ALL PERSONS AND PROPERTY; THAT THIS REQUIREMENT SHALL BE MADE TO APPLY CONTINUOUSLY AND NOT BE LIMITED TO NORMAL WORKING HOURS, AND CONSTRUCTION CONTRACTOR FURTHER AGREES TO DEFEND, INDEMNIFY AND HOLD DESIGN PROFESSIONAL HARMLESS FROM ANY AND ALL LIABILITY, REAL OR ALLEGED, IN CONNECTION WITH THE PERFORMANCE OF WORK ON THIS PROJECT, EXCEPTING LIABILITY ARISING FROM THE SOLE NEGLIGENCE OF THE DESIGN PROFESSIONAL.
4. UNAUTHORIZED CHANGES & USES: THE ENGINEER PREPARING THESE PLANS WILL NOT BE RESPONSIBLE FOR, OR LIABLE FOR, UNAUTHORIZED CHANGES TO OR USES OF THESE PLANS. ALL CHANGES TO THE PLANS MUST BE IN WRITING AND MUST BE APPROVED BY THE PREPARER OF THESE PLANS.
5. NOTICE TO CONTRACTORS: THE EXISTENCE AND LOCATION OF ANY UNDERGROUND UTILITY LINES OR STRUCTURES SHOWN ON THESE PLANS WERE OBTAINED BY A FIELD REVIEW ONLY. THE CONTRACTOR IS REQUIRED TO TAKE DUE PRECAUTIONARY MEASURES TO PROTECT THE UTILITY LINES SHOWN AND ANY OTHER LINES NOT OF RECORD OR NOT SHOWN ON THESE PLANS.
6. THE CONTRACTOR SHALL BE RESPONSIBLE FOR ANY DAMAGES TO DISTRICT OR OTHER UTILITIES CAUSED BY HIS OPERATIONS.
7. THE CONTRACTOR SHALL MAINTAIN REASONABLE ACCESS TO ALL DRIVEWAYS DURING CONSTRUCTION. MAIL SERVICE SHALL BE MAINTAINED THROUGHOUT THE COURSE OF THIS PROJECT. THE U.S. POSTAL SERVICE SHALL HAVE UNINTERRUPTED ACCESS TO MAILBOXES AT ALL TIMES.
8. PRIOR TO THE START OF CONSTRUCTION THE CONTRACTOR SHALL PROVIDE THE DISTRICT A TRAFFIC PLAN WHICH ALLOWS FOR CONTINUOUS ACCESS TO THE CEMETERY.
9. THE CONTRACTOR SHALL EXERCISE DUE CAUTION WHILE WORKING AROUND EXISTING UTILITY VAULTS.
8. THE CONTRACTOR CAN DISPOSE ON-SITE GROUND ASPHALT, GROUND SUB-GRADE MATERIAL AT A LOCATION APPROVED BY THE DISTRICT.
9. THE CONTRACTOR SHALL BE RESPONSIBLE FOR OFF-SITE DISPOSAL OF ALL NON-GROUNDED ASPHALT PAVEMENT, CONCRETE AND REINFORCEMENT.
10. CONTRACTOR SHALL SUBMIT TO ENGINEER ASPHALT SPECIFICATIONS FOR APPROVAL PRIOR TO INSTALLATION.
11. CONTRACTOR SHALL SUBMIT TO ENGINEER SUB-GRADE MATERIALS SPECIFICATIONS FOR APPROVAL PRIOR TO INSTALLATION.



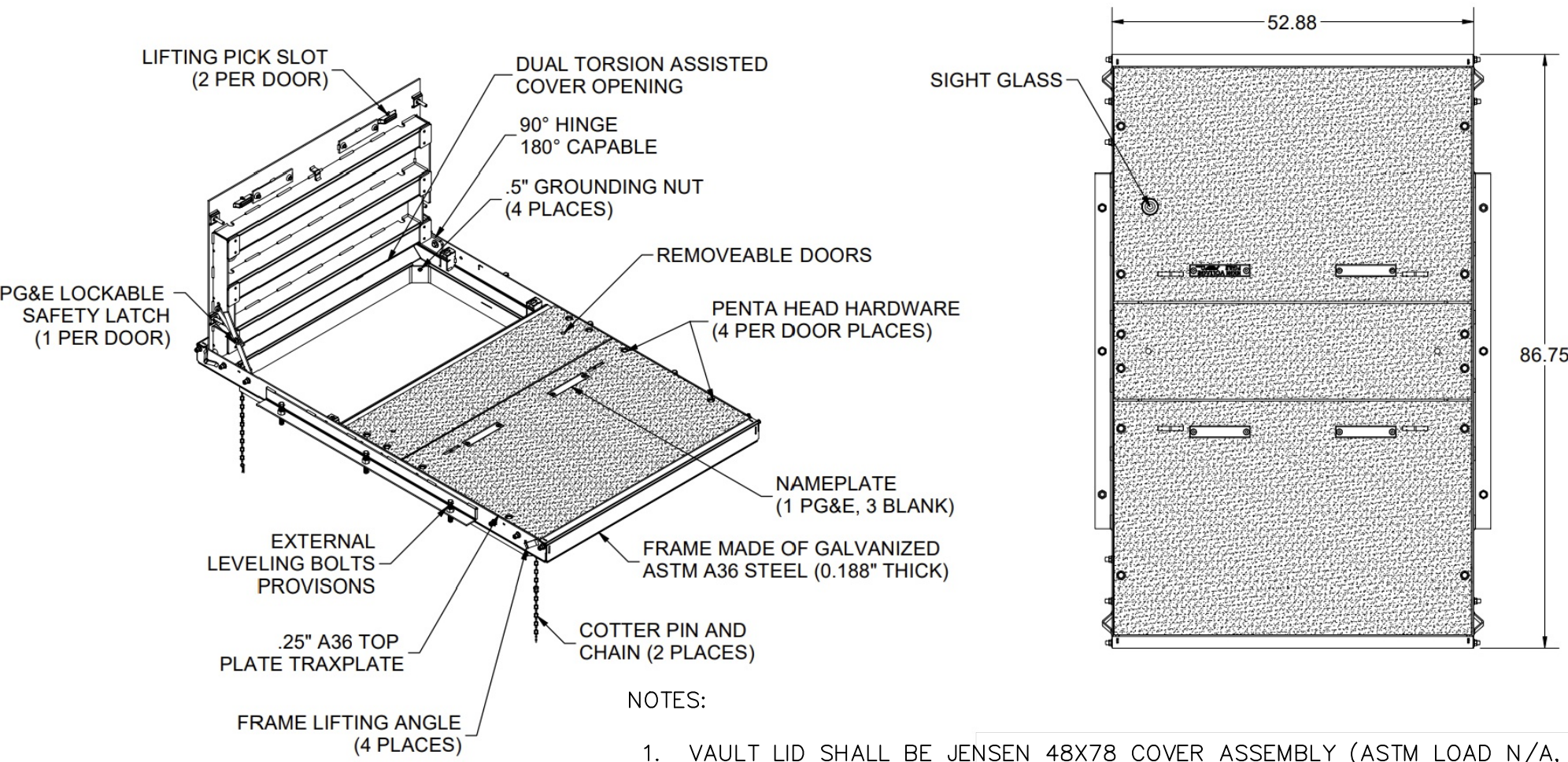
NOTES:

1. PREFAB STORM BOX AND GRATE, JENSEN 1212x24 WITH KNOCKOUT CAST-IN FRAME OR APPROVED EQUAL.
2. POUR IN PLACE NEW CONCRETE 6 INCH CURB ON TOP OF BOX. CURB ELEVATION AND ALIGNMENT SHALL BE APPROVED IN THE FIELD BY THE ENGINEER PRIOR TO CONSTRUCTION.
3. INSTALL 8 INCH HDPE SMOOTH INTERIOR AS SHOWN ON PLAN. GROUT AS REQUIRED.
4. FILL BOTTOM OF BOX WITH CONCRETE AS REQUIRED TO OUTLET INVERT OF HDPE PIPE.
5. 8 INCH STORM LINE INVERT AND ELEVATION TO BE DETERMINED AND APPROVED IN THE FIELD BY THE ENGINEER PRIOR TO INSTALLATION.



STORM INLET DETAIL 7

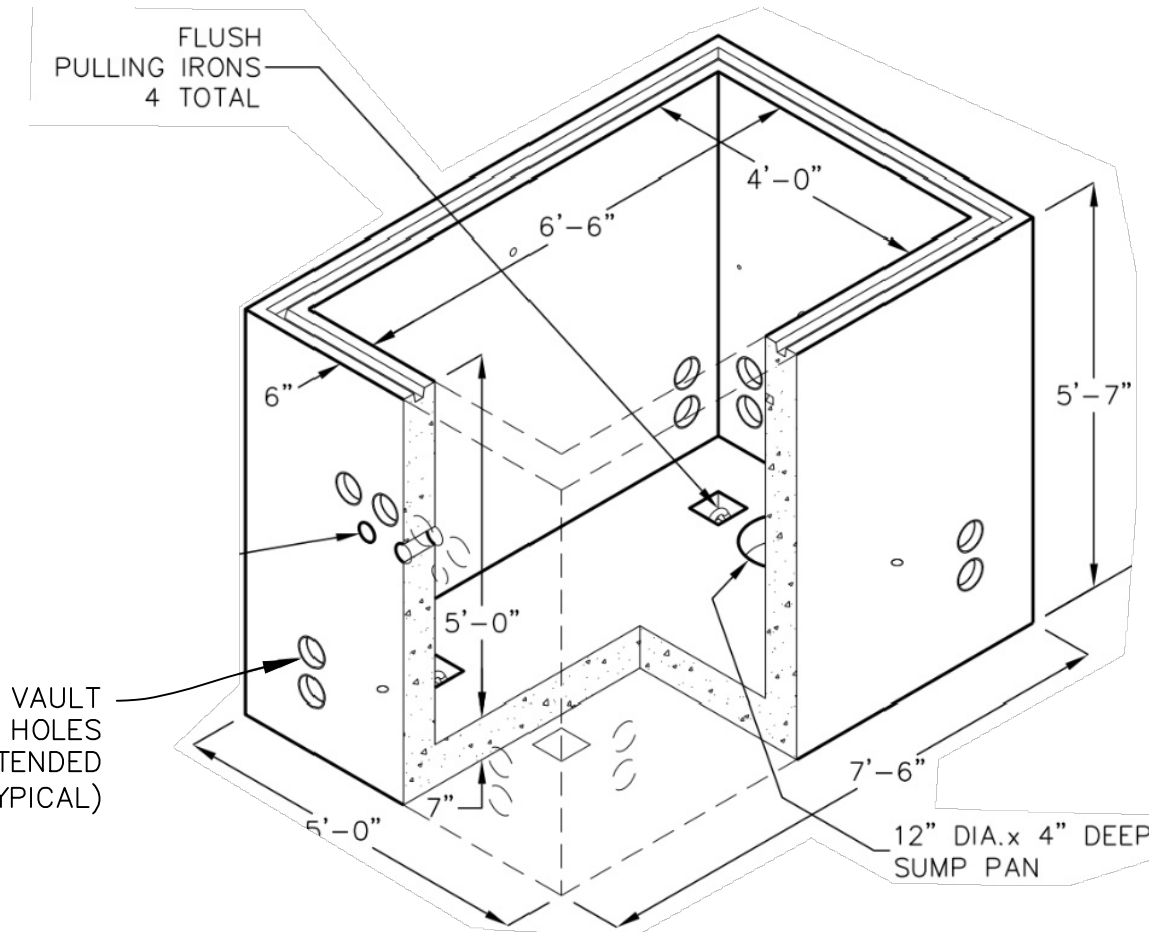
NOT TO SCALE



VAULT LID DETAIL 8

NOT TO SCALE

1. VAULT LID SHALL BE JENSEN 48X78 COVER ASSEMBLY (ASTM LOAD N/A, 2 DOOR, STEEL, HINGED, TRAXPLATE, GALVANIZED, H20 TRAFFIC RATED LID WITH LID ASSIST).
2. CONTRACTOR SHALL SUBMIT SUBMITTAL TO ENGINEER FOR APPROVAL PRIOR TO INSTALLATION.



CONCRETE UTILITY VAULT 9

NOT TO SCALE

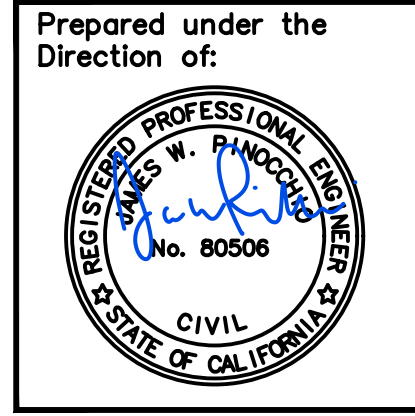
NOTES:

1. VAULT SHALL BE JENSEN 4' X 6'6" PRECAST CONCRETE VAULT OR APPROVED EQUAL.
2. HOLES WILL BE FIELD CORE DRILLED BY THE CONTRACTOR. ELEVATIONS, SIZE QUALITY IS SUBJECT TO SITE CONFIGURATION REQUIREMENTS. CONTRACTOR SHALL VERIFY TOTAL HOLES PRIOR TO INSTALLATION. NUMBER OF HOLES TO BE CORE DRILLED SHALL MATCH THE NUMBER EXISTING WATER AND ELECTRICAL CONDUITS. FIELD VERIFICATION REQUIRED PRIOR TO INSTALLATION.
3. ALL HOLES SHALL BE SEALED COMPLETELY.
4. VALVE SUPPORTS AND STANDS SHALL BE SUPPLIED AND INSTALLED FOR ANY VALVES OVER 10 POUNDS.
5. KNOWN PIPING IN VAULT IS WATER AND ELECTRICAL. ELECTRICAL IS FOR IRRIGATION CONTROL WIRES.
6. CONTRACTOR SHALL SUBMIT SHOP DRAWINGS FOR ROUTING ALL PIPING INSIDE VAULT.
7. VAULT SHALL BE INTALLED OVER 12 INCHES CLASS II BASE ROCK COMPACTED AT 95% R.C.

ESTIMATED QUANTITIES

FULL GRIND AND REPLACE (3 OVER 6) PER DETAIL 1:	34,487 SF
FULL GRIND AND REPLACE (3 OVER 3) PER DETAIL 1:	22,714 SF
DIGOUT REPAIR PER DETAIL 2:	1,056 SF
GEOTEXTILE FABRIC:	60,316 SF
1.5 INCH GRIND AND REPLACE PER DETAIL 3:	9,674 SF
ROADWAY WIDENING PER DETAIL 4 & 5:	1,705 SF
REMOVE AND REPLACE UTILITY BOX, PIPING, VALVES AND EQUIPMENT:	2 TOTAL
SEAL COAT COMPLETE ROADWAYS:	160,000 SF
NEW DRAINAGE BOX AND GRATE:	2
8 INCH HDPE STORM LINE:	40 LF
CONCRETE VERTICAL CURB:	335 LF

NEWCASTLE ROCKLIN GOLD HILL CEMETERY DISTRICT  
850 TAYLOR ROAD, NEWCASTLE, CA 95658  
**PAVEMENT NOTES AND DETAILS**  
Newcastle Placer County California



REVISIONS	DATE
BID SET	06/02/2026

JOB #	2025.1
DESIGNED	JP
DRAWN	JP
CHECKED	JP
DATE	06/02/2026
SCALE	AS SHOWN

SHEET **C2**